



Swatch Book

ISSUED 10.2023

Table of Contents



Click on any title in the Table of Contents to be redirected to it.

03 | Glossary

A Glossary of cover personalisation technologies and their abbreviations as well as default add-ons.

04 | Textiles

Textiles are perfect for anyone craving an aesthetically pleasing, durable linen product that is soft to the touch.

07 | Leatherettes

Leatherettes are made from synthetic materials making them vegan-friendly. A great choice for those craving the look and feel of real leather.

10 | Velvet & Suede Textiles

Rich and soft velvets in a selection of colours. Find your favourite velvet or suede finish here.

14 | Materials Available While Supplies Last

The materials in this section will be removed from our offer shortly and are available while supplies last. Please keep that in mind when selecting your cover material.

17 | Embossed Text Colours

Embossed Text foil colours are presented on C16 leatherette. Foil colours may differ slightly on the final product depending on the chosen leatherette base.

Glossary

Embossed Text (E)

This technology impresses a bookbinding font which can be left plain or embossed with your choice of coloured foil. Availability of this personalisation on a cover material is marked with an (E).

Disclaimer: for exact availability double-check in the nShop. In some cases, certain material batches may not allow for this personalisation.

Laser Etch (L)

This technology exposes the base layer of the leatherette. Due to its invasive character, this technology is available on selected materials. Availability of this personalisation on a cover material is marked with an (L).

Disclaimer: for exact availability double-check in the nShop. In some cases, certain material batches may not allow for this personalisation.

UV Print (UV)

This technology prints a layer on the chosen material. The colour of each UV print is carefully selected to best match each material's colour. Availability of this personalisation on a cover material is marked with a (UV).

Disclaimer: for exact availability double-check in the nShop. In some cases, certain material batches may not allow for this personalisation.

Stamp (S)

Created by pressing a set of characters onto a cover's surface. No new colors are created in the process, making it a subtle and elegant design option.

Ribbons

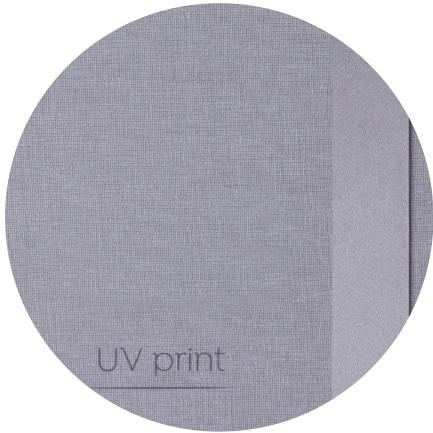
Ribbons are matched the interior colour of boxes at default. They cannot be mixed and matched.

IMPORTANT:



The availability of personalisation options and materials must be checked in the nShop.

Textiles



A56 | UV•L
Mist Grey Plain Textile



A25 | UV•L
Wheat Duo-weave Textile



A27 | UV
Frosty Blue Duo-weave Textile



A19 | UV•L
Brown Plain Textile



A37 | UV•L
Smoke Grey Plain Textile



A49 | UV
Mint Green Plain Textile

Textiles



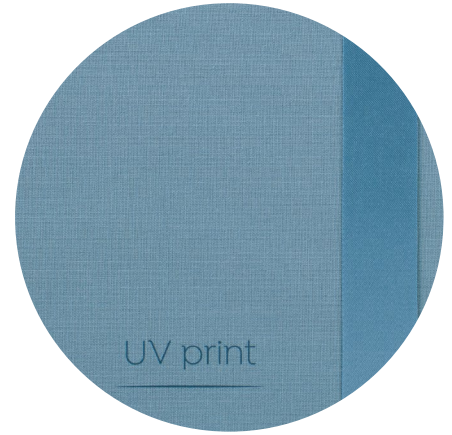
A28 | UV

Cold Grey Duo-weave Textile



A30 | UV

Warm Grey Duo-weave Textile



A52 | UV

Pigeon Blue Plain Textile



A47 | UV

Baby Pink Plain Textile



A48 | UV

Blush Pink Plain Textile



A39 | L • UV

Black Plain Textile

Textiles



A50 | UV
Sage Green Plain Textile



A51 | UV
Baby Blue Plain Textile



A58 | UV
Linen Beige

Leatherettes



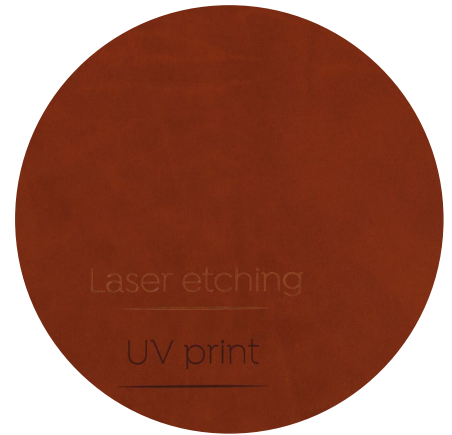
C5 | E•UV•L•S

Raven Black Vintage Leatherette



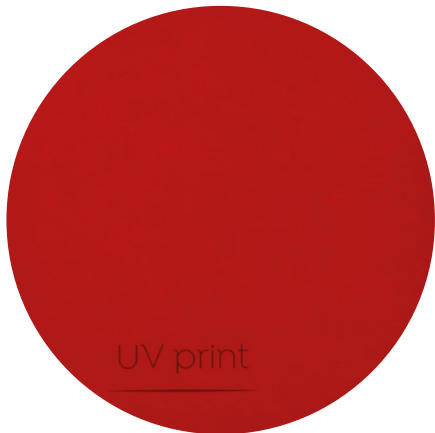
C10 | E•UV•L•S

Dark Brown Vintage Leatherette



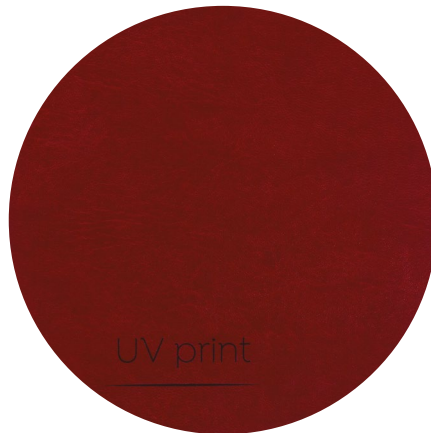
C12 | E•UV•L•S

Chestnut Vintage Leatherette



F2 | E•UV•S

Red Vintage Leatherette



C15 | E•UV•S

Cranberry Vintage Leatherette



D1 | E•UV•L•S

Brown Vintage Leatherette

Leatherettes



E4 | E • UV • L • S

Pitch Black Matte Leatherette



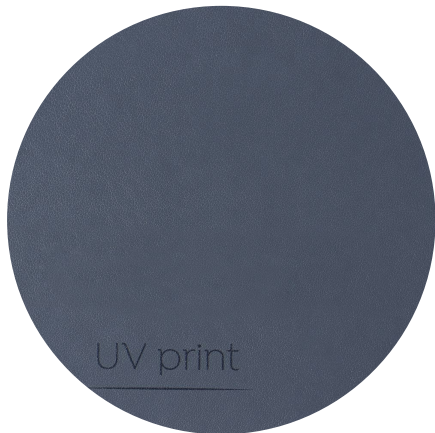
E5 | E • UV • L • S

Red Wine Matte Leatherette



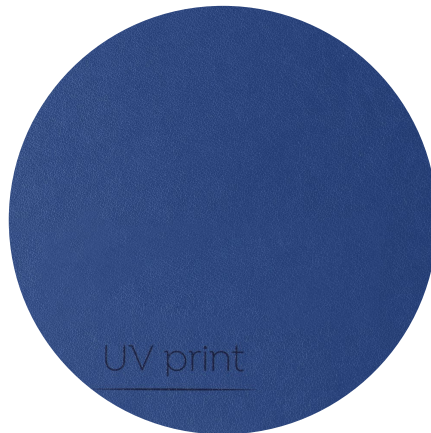
G2 | UV • L • S

Hunter Green Vintage Leatherette



E8 | E • UV • L • S

Stone Grey Matte Leatherette



E9 | E • UV • L • S

Navy Matte Leatherette



C16 | E • UV • S

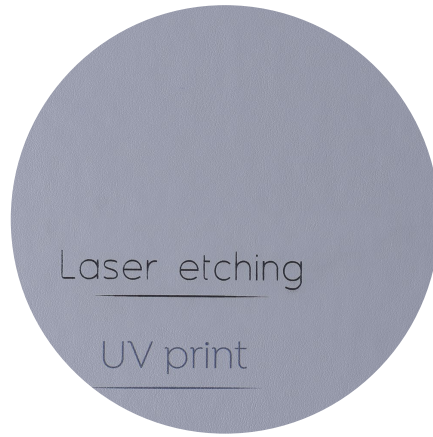
Oatmeal Matte Leatherette

Leatherettes



F3 | E·UV·S

Ivory Vintage Leatherette



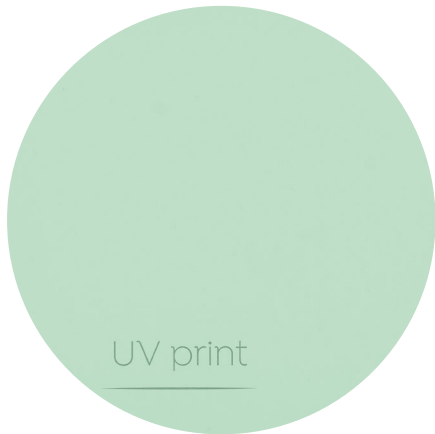
J28 | E·UV·L·S

Smoke Grey Matte Leatherette



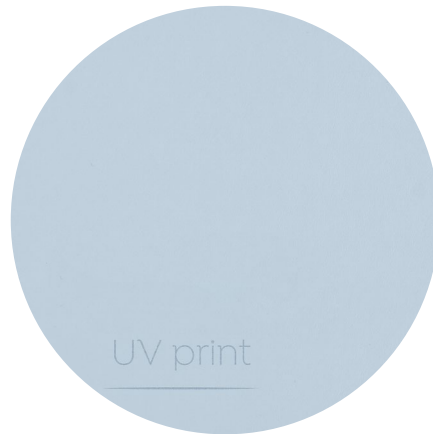
J47 | E·UV·S

Baby Pink Matte Leatherette



J49 | E·UV·S

Mint Green Matte Leatherette



J51 | E·UV·S

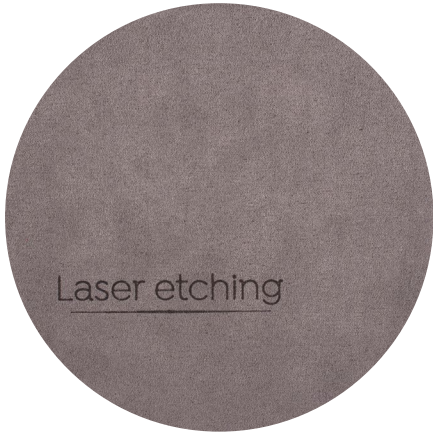
Baby Blue Matte Leatherette



F1 | E·UV·L·S

Frothy White Matte Leatherette

Velvet & Suede Textiles



V4 | L

Iron Grey Suede Textile



V6 | L

Deep Sea Blue Velvet Textile



V7 | L

Emerald Green Velvet Textile



V8 | L

Tapue Brown Velvet Textile



V9 | L

Dijon Yellow Velvet Textile



V13 | L

Cardinal Red Suede Textile

Velvet & Suede Textiles



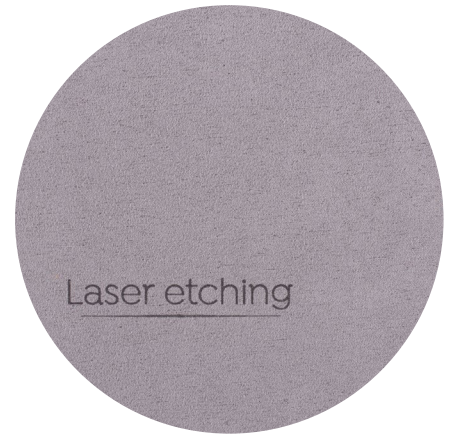
V1 | L

Dove Grey Suede Textile



V2 | L

Silver Grey Velvet Textile



V3 | L

Elephant Grey Suede Textile



V11 | L

Soft Rose Pink Velvet Textile



V14 | L

Off White Velvet Textile



V15 | L

Ecru Beige Velvet Textile

Velvet & Suede Textiles



V16 | L

Turtle Dove Velvet Texture



V17 | L

Soft Lilac Velvet Texture



V18 | L

Camel Brown Velvet Texture



V19

Polished Bronze Velvet Texture



V20 | L

Crimson Red Velvet Texture



V21 | L

Burgundy Red Velvet Texture

Velvet & Suede Textiles



V22 | L

Robin Egg Velvet Textile



V23 | L

Aquamarine Blue Velvet Textile



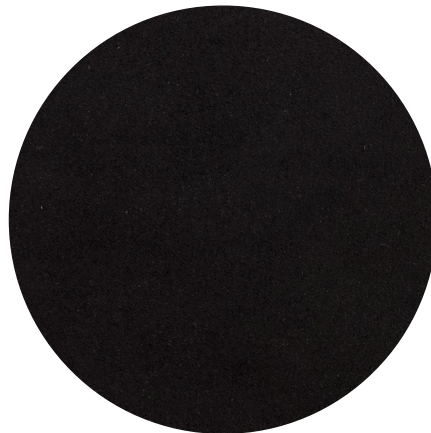
V24 | L

Royal Blue Velvet Textile



V25 | L

Licorice Black Velvet Textile



V26 | L

Anthracite Black Suede Textile

Available for box interiors only,
not suitable as a cover material.

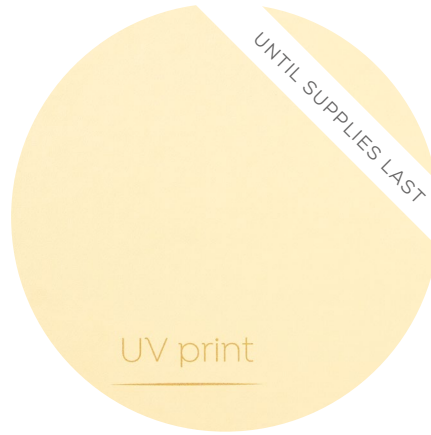
Materials Available While Supplies Last

Confirm availability in nShop before ordering



V12 | L

Fandango Pink Suede Textile



C3 | E • UV

Champagne Matte Leatherette



H14 | L

Charcoal Grey Duo Texture



H6 | UV

Yellow-Orange Duo Texture



E11 | E • UV • L

Sunny Yellow Matte Leatherette

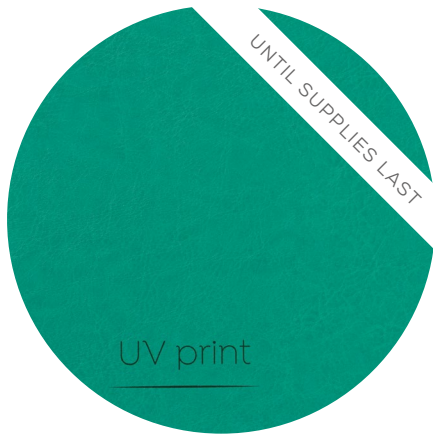


A54 | UV

Burlap Duo-weave Texture

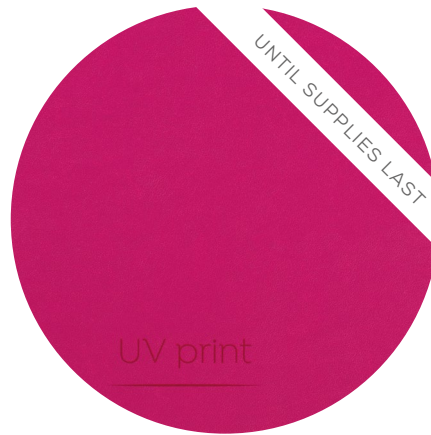
Materials Available While Supplies Last

Confirm availability in nShop before ordering



C21 | E • UV

Turquoise Vintage Leatherette



C22 | E • UV

Fuchsia Vintage Leatherette



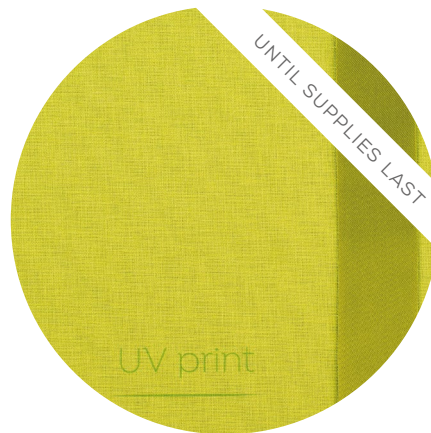
E6 | E • UV • L

Walnut Matte Leatherette



C13 | E • UV

Ginger Vintage Leatherette



A21 | UV

Lime Green Plain Textile



A40 | UV • L

Sandy Plain Textile

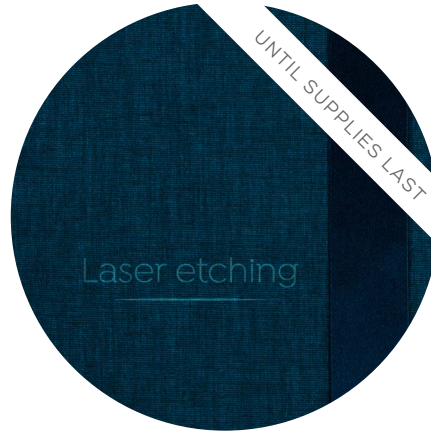
Materials Available While Supplies Last

Confirm availability in nShop before ordering



A10 | UV • L

Polished Antique Gold Textile



H12 | L

Midnight Sky Duo Textile



A12 | L

Polished Burgundy Textile



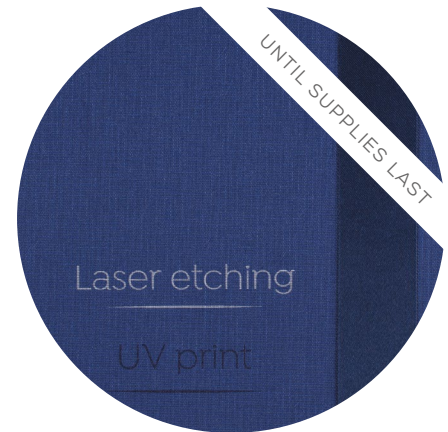
A11 | L

Polished Onyx Textile



A31 | UV

Linen Plain Textile



A38 | UV • L

Navy Plain Textile

Embossed Text Colours

Embossed Text foil colours are presented on C16 leatherette.

Foil colours may differ slightly on the final product depending on the chosen leatherette base.



KO | None



FL1 | Matte White



FL2 | Matte Grey



FL3 | Metallic Silver



FL4 | Metallic Gold



FL5 | Metallic Rose Gold

Embossed Text Colours

Embossed Text foil colours are presented on C16 leatherette.

Foil colours may differ slightly on the final product depending on the chosen leatherette base.



FL6 | Metallic Red



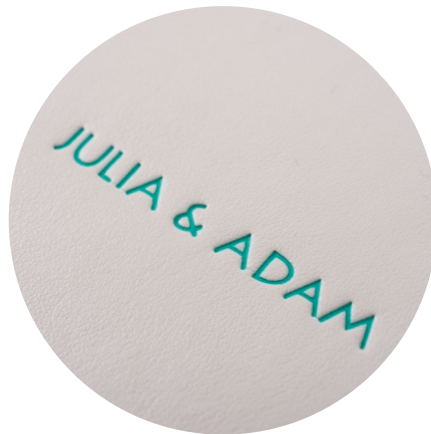
FL7 | Matte Hot Pink



FL8 | Matte Brown



FL9 | Matte Navy



FL10 | Matte Spring Green



FL11 | Matte Black